

MARTIN® CV Series Vibrators

Form No.
L2734-03 8/99

Technical Data Sheet

CV Series Ball Vibrators are of extra heavy construction for operation in adverse conditions of water, heat, cold, and grit.

Vibration is controlled from a few cycles per minute to full speed by installation of a needle valve or pressure regulator.

CV Series Vibrators ensure satisfactory and efficient vibration for the toughest jobs. CV-35 is considered the work horse of the series, producing 675 lb of force at 10,000 vpm.

Models CV-19 through CV-35 are available in both cast iron or die cast aluminum bodies with the CV-10 available in aluminum construction only.



Part Numbers and Specifications

Model	Part no. aluminum	Part no. ductile iron	Part no. air muffler	Unbalance lb—in.	vpm†	db†
CV-10	12529			.003	17500	77
CV-19	12530	23929	31623	.037	11200	79
CV-25	13412	12784	31623	.110	8750	80
CV-35	13395	10814	31623	.240	7700	82

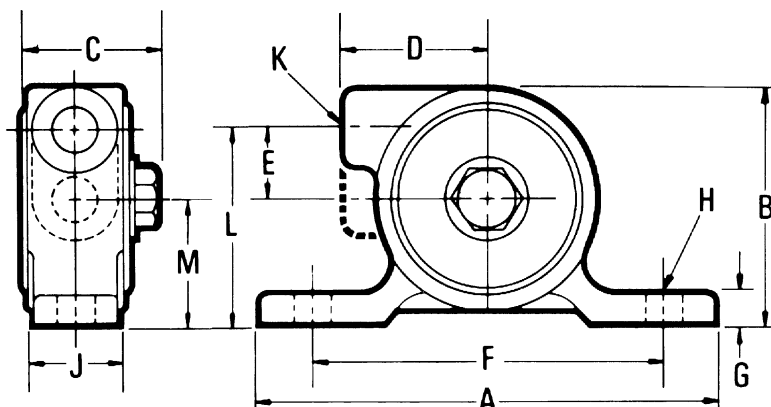
†Decibels measured with muffler connected to exhaust port and vibrator securely mounted on test block. Vpm represents highest speed vibrator can attain and produce 85 db or less. (Note: Test is a comparison of vibrators. Levels will vary with each application.)

Performance Data

Model	20 psi (1.38 bar)			40 psi (2.76 bar)			60 psi (4.14 bar)			Max. lb (kg) material in slope of bin
	vpm	Force lb (kg)	cfm (lit/min)	vpm	Force lb (kg)	cfm (lit/min)	vpm	Force lb (kg)	cfm (lit/min)	
CV-10	17000	25 (11)	2.0 (57)	21000	38 (17)	4.0 (113)	25000	54 (24)	6.0 (170)	540 (245)
CV-19	10500	115 (52)	4.0 (113)	14000	205 (93)	7.0 (198)	16000	270 (122)	11.0 (312)	2700 (1225)
CV-25	7500	175 (79)	6.0 (170)	9700	275 (125)	10.0 (283)	11000	380 (172)	13.0 (368)	3000 (1361)
CV-35	6800	315 (143)	6.0 (170)	8800	530 (240)	12.0 (340)	10000	675 (306)	17.0 (481)	6750 (3062)

Rule of thumb vibrator sizing: One lb vibrator force for each 10 lb of bin content. Mount vibrator as close as possible to material outlet. Reinforce mount area to prevent flexure of bin wall at mount location.

Dimensions - in. (mm)



Model	A	B	C	D	E	F	G	H*	J	K**	L	M
CV-10	3.875 (98)	2.000 (51)	1.250 (32)	1.250 (32)	0.5937 (15)	3.000 (76)	0.250 (6)	0.3125 (8)	0.750 (19)	1/8-27 (3)	1.6562 (42)	1.0625 (27)
CV-19	5.125 (130)	3.125 (79)	1.7187 (44)	1.750 (44)	0.8125 (21)	4.000 (102)	0.375 (10)	0.375 (10)	1.250 (32)	1/4-18 (6)	2.4375 (62)	1.750 (44)
CV-25	5.250 (133)	4.250 (108)	2.250 (57)	2.250 (57)	1.125 (29)	4.000 (102)	0.500 (13)	0.500 (13)	1.750 (44)	1/4-18 (6)	3.625 (92)	2.500 (64)
CV-35	5.250 (133)	4.250 (108)	2.250 (57)	2.250 (57)	1.125 (29)	4.000 (102)	0.500 (13)	0.500 (13)	1.750 (44)	1/4-18 (6)	3.625 (92)	2.500 (64)

*Bolt size.

**NPT Standard Pipe tap size.

See the operator's manual for application information and mount selection.