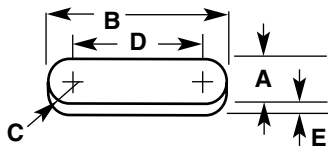


Hardware & Equipment

Freeman Lok-In Pattern Letters

Freeman Lok-In Pattern Letters are widely used in the foundry industry for the fast changing of letters and numbers used for date code, serial number, and alloy identification. The holder and letters are made with a dovetail design to secure the characters firmly in place while permitting their easy removal and replacement. They are made of high quality investment cast steel.

Please note that the number nine is ordered as a six and the letter O is ordered as a zero.



Letter Holder Size	3 Letter			4 Letter		5 Letter		6 Letter		7 Letter		8 Letter		9 Letter			
	A	C	E	B	D	B	D	B	D	B	D	B	D	B	D		
1/4"	1/2	1/4	3/16	1 11/16	1 3/16	1 31/32	1 15/32	2 1/4	1 3/4	2 17/32	2 1/32	2 13/16	2 5/16	3 3/32	2 19/32	3 13/32	2 29/32
3/8"	3/4	3/8	3/16	3 11/32	2 19/32	2 13/16	2 1/16	3 1/4	2 1/2	3 11/16	2 15/16	4 3/16	3 7/16	4 19/32	3 27/32	5 11/32	4 9/32
1/2"	15/16	15/32	3/16	3 1/16	2 1/8	3 21/32	2 23/32	4 9/32	3 11/32	4 31/32	4 1/32	5 9/16	4 5/8	6 7/32	5 9/32	6 7/8	5 15/16
3/4"	1 1/8	9/16	3/16	3 19/32	2 15/32	4 11/32	3 7/32	5 1/8	4	5 27/32	4 23/32	6 23/32	5 19/32	7 3/8	6 1/4	8 1/8	7