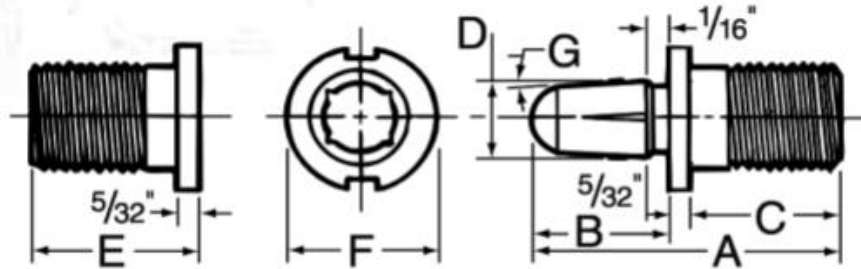




## Master Sure-Lock (True-Line) Steel Dowel Dimensions



### Dowel Size

	#1	#2	#3	#4
<b>Thread Size</b>	3/8 – 24	7/16 – 20	1/2 - 20	5/8 - 18
<b>A</b>	1 1/4"	1 11/32"	1 1/2"	1 19/32"
<b>B</b>	17/32"	5/8"	11/16"	25/32"
<b>C</b>	9/16"	9/16"	21/32"	21/32"
<b>D</b>	1/4"	5/16"	3/8"	1/2"
<b>E</b>	23/32"	23/32"	13/16"	13/16"
<b>F</b>	9/16"	5/8"	11/16"	13/16"
<b>G</b>	1 1/2°	3°	2 1/4°	4°

	#2 Long	#3 Long	#4 Long
<b>Thread Size</b>	7/16 - 20	1/2 - 20	5/8 – 18
<b>A</b>	2 7/32"	2 1/2"	2 11/16"
<b>B</b>	1 1/4"	1 3/8"	1 9/16"
<b>C</b>	13/16"	31/32"	31/32"
<b>D</b>	5/16"	3/8"	1/2"
<b>E</b>	23/32"	13/16"	13/16"
<b>F</b>	5/8"	11/16"	13/16"
<b>G</b>	4°	4°	4°

The user shall determine the suitability of this product for their application and assumes all risks and liabilities associated with the use of this product. The exclusive remedy for all proven claims is replacement of our materials only and in no event shall Freeman Mfg. & Supply Co. be liable for special, incidental, or consequential claims.

READ SAFETY DATA SHEETS AND PRODUCT LABELS BEFORE USING PRODUCT