

[HOME](#)[MY ACCOUNT](#)[SAMPLE KITS](#)[VIDEO LIBRARY](#)[CLOSEOUTS](#)[DIY WEBSITE](#)

Jan./Feb.
2017 *in this issue*

**Product Spotlights, Technical Q&A,
and Exclusive Newsletter Video Links**

Protowax, Coated Dieboards, Glove Mold Projects,
Storing Polyurethanes, and more!

**Our Interactive
Closeout List
is live!**

**DIY-size Products:
Direct Ordering
on [Miapoxy.com](#)**

Master Protowax

This unique machinable investment casting wax is perfect for prototype work or even short-run part requirements.

- Easily turned, milled, drilled, tapped, and carved without any tool wear
- Excellent stability and low expansion rate virtually eliminate investment shell cracking problems
- Available in blocks, cylinders, and custom sizes



Color	Red
Specific Gravity	0.94
Ash Content	0.010%
Hardness	43 Shore D
Softening Point	157°F
Volumetric Shrinkage	7%
Viscosity @ 160°F	30

Free 1.5 lb. Block
Just pay shipping!

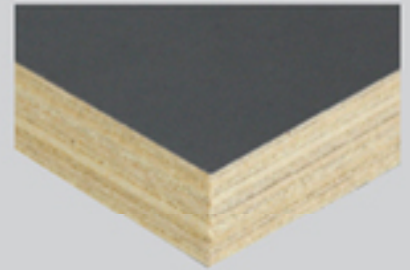
Get a free 2" x 3" x 7" block while supplies last! Mention this newsletter when ordering over the phone, or click [here](#) to order online.

Coated Dieboards

Our coated dieboards offer extra stability, ideal for many applications.

Armorplate Melamine Dieboard

This Melamine-laminated Finnish Birch is engineered to offer converters a more dimensionally stable platform for steel rule dies. The Melamine surfaces are very hard and impervious to moisture. It is ideal for clean die applications and available in white or gray.



UV Coated Birch Dieboard

This UV Stabilized Birch provides a very flat, very stable cutting die, with completely sealed smooth hard surface. This lab-tested die board is great for strippers and blankers as well.

White Seal Birch Dieboard



This Dieboard offers diemakers a unique look and five coats of finish for the ultimate in stability. The white surface not only completely seals the board, but improves the visibility of the dimensional marks and laser etching. It is perfect for tooling matched with steel counterplates.

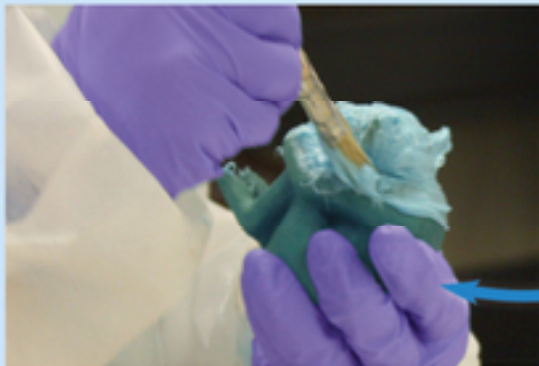


Contact your technical representative for more details or samples and keep an eye out for more additions to our die making line!

[View Website](#) ►►

DIY CORNER

Duplicating Made Easy!



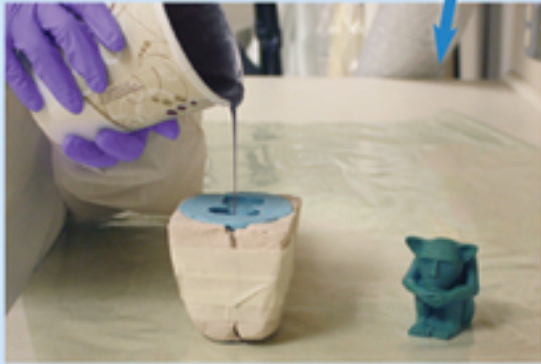
Using the glove mold technique, even complicated parts can be easily reproduced! Here, our Tech Team uses [Bluestar Silicone V-330 with the CA-35 catalyst](#). This silicone combination offers both high tear strength and high elongation properties, perfect for creating a flexible glove mold. A third component, [Bluestar Thixo Additive](#), is added to increase the viscosity of the silicone from pourable to brushable. Here's how they did it:

1. Create a flexible glove mold by brushing the silicone on the part, filling in all cracks and voids. It will easily peel away from the part but you now require a back-up so it can hold its shape during the casting process.
2. Create two support halves with [Freeman 1020](#) or [Freeman 1030](#), dough-like materials that are easily molded by hand. When cured, demold the original part with ease.





3. With the original part removed and mold secure, cast a new part. *Repro Fast-Cast Urethanes* are a popular choice for quick casting and demolding!



DIY-size products are available for direct ordering at Miapoxy.com.

[View Website](http://Miapoxy.com) ►►

Tech Q&A



The Tech Team is ready to help!
Monday – Friday, 8 am – 5 pm EST
Just call (800) 321-8511 opt. 5

Winter Weather Advisory! A Cold Weather Tip for Polyurethanes



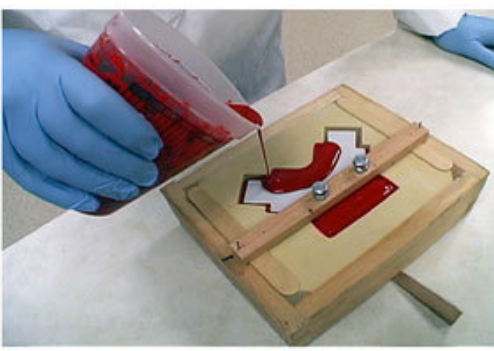
Does your material look like this? The cold weather can have negative effects on liquid tooling materials.

Check out our guide to see how to fix it!

[View Guide](#) ►►

Exclusive Newsletter Videos

The following videos are exclusive to newsletter subscribers. New videos will be linked here before they are available anywhere else. Videos available now are below. More videos are in development, so check back in future newsletters. You can also check out the rest of our [video library](#) or purchase the [DVD on eBay](#).



[Creating a Part with Freeman Fillers](#)

[Casting Thin-Walled Parts](#)

[Casting Molds & Models w/Intricate Detail](#)

[Multiple Cavity Molds](#)

[Silicone Molds w/Complex Parting Lines](#)

[Building an Epoxy/Fiberglass Mold](#)

[Vacuum Bagging a Carbon Fiber Part](#)

Don't forget to take advantage of our website for resources such as TDS, SDS, and more for all of our products. Thank you for subscribing to our newsletter, and we look forward to servicing your material needs!

Sincerely,

Freeman Manufacturing & Supply Company

[About Us](#) | [Contact Us](#)



Robly