

HOME

MY ACCOUNT

SAMPLE KITS

VIDEO LIBRARY

CLOSEOUTS

DIY WEBSITE

May/June
2018 *in this issue*

Product Spotlights, Technical Q&A,
and Exclusive Newsletter Video Links

RenShape 472: The Workhorse of Tooling Boards,
Recommended Adhesives for RenShape, and RenShape Cut Sizes

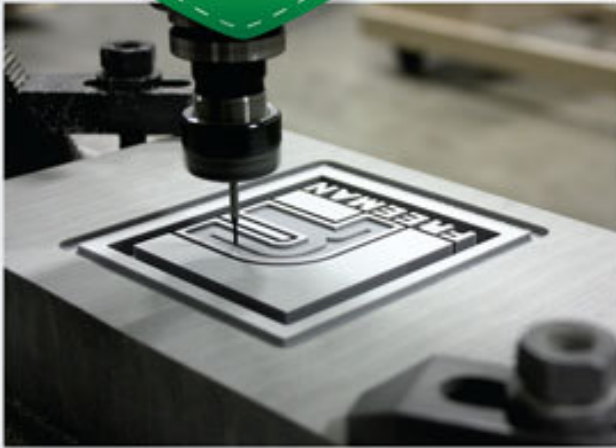
Our Interactive
Closeout List
is live!

DIY-size Products:
Direct Ordering
on Miapoxy.com

[Miss our last newsletter? Click here to view!](#)

RENSHAP
472

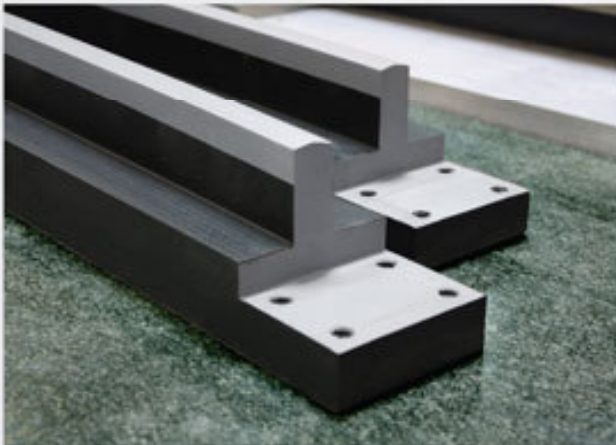
“The Workhorse of Tooling Boards”



Recently coined by a customer as “The Workhorse of Tooling Boards,” **RenShape 472** performs very well in a multitude of applications.

This 55 lb. density polyurethane board features a unique combination of accuracy, durability, and heat resistance.

- Great choice for **vacuum form** and **thermoform tooling** when aluminum is not required
- Ideal for medium-high production **foundry applications**
- Machines well with a **smooth surface finish**
➔ *Less hand work!*
- High wear resistance and excellent dimensional stability results in **long-lasting and accurate check fixtures**



Request Sample

Have questions? Contact our Tech Team at
(800) 321-8511 opt. 5 or tech@freemansupply.com!



RenShape Boards: Matched Adhesives

Q: Which adhesives can I use on RenShape 472?

A: We have a complete [reference table](#) of recommended adhesives and repair materials for our entire line of RenShape products. The following adhesives are ideal for bonding RenShape 472:



SMALL TO MEDIUM TOOLS

Freeman Fast Set 505

- Two component epoxy adhesive
- 5 min. gel time, 15 min. handling time
- 1:1 mix ratio & color indicator ensure complete mixing

Freeman Fast Set 517

- Two component epoxy adhesive
- 15-20 min. gel time for more complicated parts
- 3-4 hr. handling time
- 1:1 mix ratio & color indicator ensure complete mixing

LARGE TOOLS

Ren-Weld 103

- Two component epoxy adhesive
- 20 min. gel time, 10 hr. handling time
- 2,100 cps viscosity for ease of application
- Flow control agents to prevent excessive run-out

RenLam 1700-1

- Unfilled, general purpose laminating system
- Excellent moisture and chemical resistance
- Multiple hardeners for gel time options

ELEVATED TEMPERATURE TOOLS

RenLam 4005

- Unfilled, room-temperature setting laminating system
- Heat-resistant epoxy for continuous use at 300°F
- 50 min. gel time and low viscosity



**Have questions? Contact our Tech Team at
(800) 321-8511 opt. 5 or tech@freemansupply.com!**

DIY CORNER

NEW
Sizes!

RenShape Cut Sizes Available!

Try our smaller, easier to handle sizes of RenShape products on Miapoxy.com!

We offer cut and non-standard sizes of many of our RenShape products in a variety of dimensions. Get yours today at 50% off list price! We've also added new cut sizes for RenShape [5045](#), [460](#), [5460](#), [BM-70](#), and [5179](#) (Red Board!). Get them before they're gone!



 [Try RenShape Cut Sizes](#)

All cut sizes are available only while supplies last.

How to Ship Smart

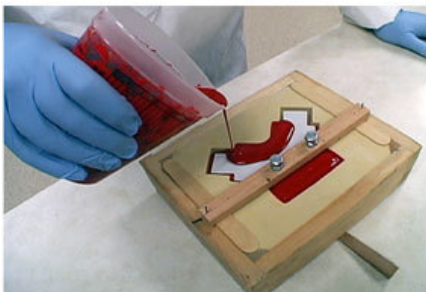
We strive to help you manage your business with any and all resources available to us. Stay informed with these articles on shipping rates and save on shipping costs by being in the know!

[Trucking Challenges Impact SCM via Inbound Logistics](#)

[Truck Driver Shortages via Business Insider](#)

Exclusive Newsletter Videos

As always, the following videos are exclusive to newsletter subscribers!



[Creating a Part with Freeman Fillers](#)

[Casting Thin-Walled Parts](#)


[Casting Molds & Models w/Intricate Detail](#)

[Multiple Cavity Molds](#)


[Silicone Molds w/Complex Parting Lines](#)

[Building an Epoxy/Fiberglass Mold](#)

[Vacuum Bagging a Carbon Fiber Part](#)

 [Full Video Library](#)

 [YouTube Channel](#)

 [Purchase DVD on !\[\]\(eebbd3dc1abeccf4c1e5751ec03fc559_img.jpg\)](#)

Don't forget to take advantage of our [website](#) for resources such as TDS, SDS, and more for all of our products. Thank you for subscribing to our newsletter, and we look forward to servicing your material needs!

Sincerely,
Freeman Manufacturing & Supply Company

[About Us](#) | [Contact Us](#)

